

# Agisoft PhotoScan

Processing Report

24 June 2014



# Survey Data

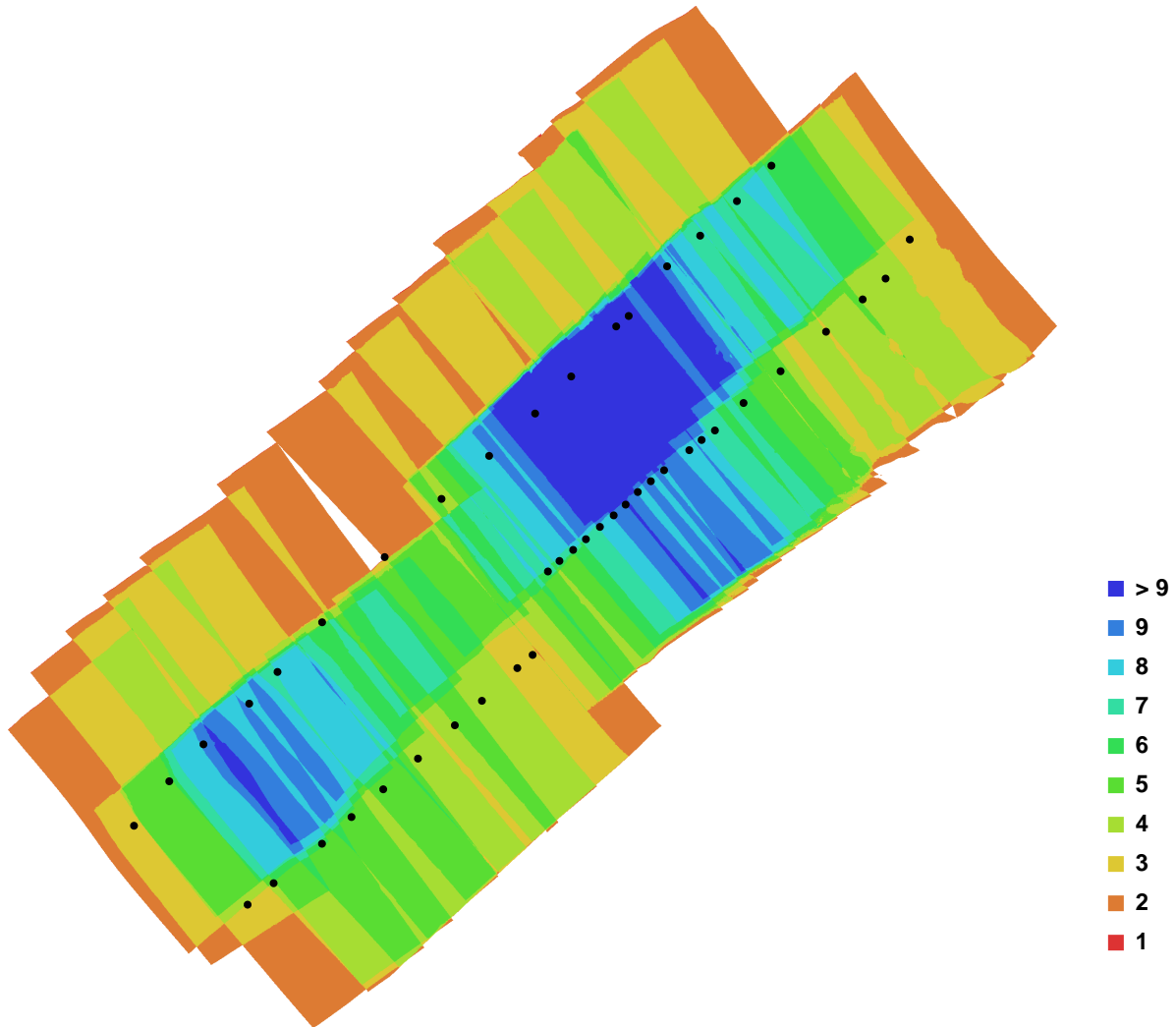


Fig. 1. Camera locations and image overlap.

Number of images:	46	Camera stations:	46
Flying altitude:	139.991 m	Tie-points:	303111
Ground resolution:	0.0269205 m/pix	Projections:	823142
Coverage area:	0.161558 sq km	Error:	0.728925 pix

Camera Model	Resolution	Focal Length	Pixel Size	Precalibrated
HDR-CX730E (3.8 mm)	6544 x 3680	3.8 mm	unknown	No

Table. 1. Cameras.

# Ground Control Points



Fig. 2. GCP locations.

Label	X error (m)	Y error (m)	Z error (m)	Error (m)	Projections	Error (pix)
1	-0.009805	0.008406	0.002640	0.013182	2	0.085450
10	-0.004009	-0.000212	0.018321	0.018756	6	0.217452
2	0.009289	-0.013546	-0.005348	0.017274	4	0.093275
3	0.003385	0.002515	-0.002573	0.004940	7	0.240782
4	-0.058057	0.021669	0.115804	0.131342	2	0.263323
7	-0.012458	0.000821	0.017545	0.021534	3	0.379381
8	0.017258	0.000707	0.016395	0.023814	3	0.036366
9	-0.001916	0.004091	-0.021284	0.021758	7	0.302044
<b>Total</b>	<b>0.022465</b>	<b>0.009669</b>	<b>0.043038</b>	<b>0.049502</b>	<b>34</b>	<b>0.239608</b>

Table. 2. Control points.

# Digital Elevation Model

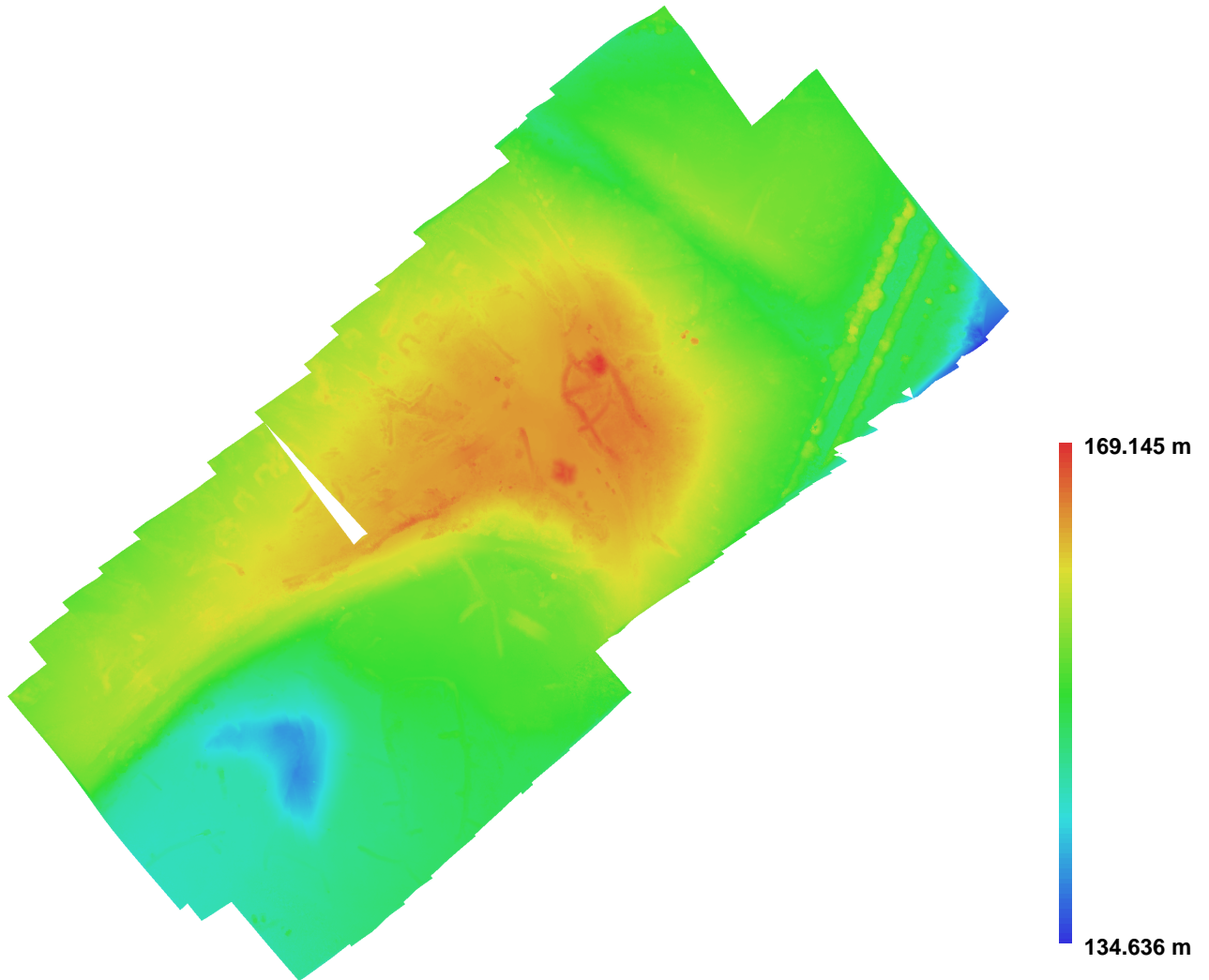


Fig. 3. Reconstructed digital elevation model.

Resolution: 0.0269205 m/pix  
Point density: 1379.86 points per sq m